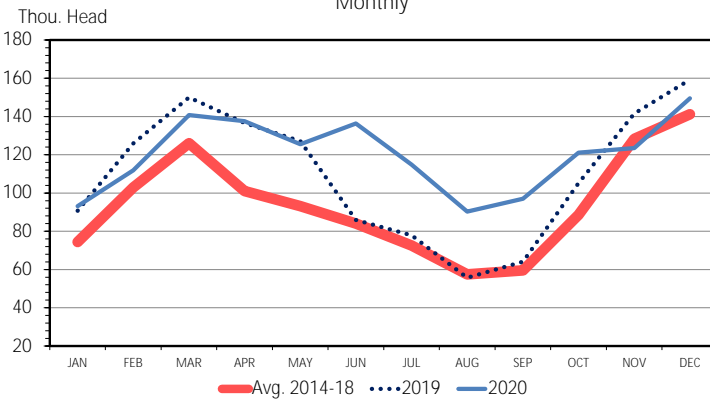


USDA Foreign Agricultural Service (FAS) released December trade data on Friday, February 5, 2021. Meat trade data is available on a product weight basis while carcass weight data will be released from Economic Research Service (ERS) today. This DLR will focus on livestock trade data for 2020 looking at cattle and hogs.

Total cattle imports for 2020 was just over 2.11 million head, up 3.5% from 2019 and the highest import level since 2014 which totaled 2.36 million head. Mexico and Canada are the only live cattle suppliers to the U.S. each representing 68% and 32% of the market in 2020. Shipments from Mexico totaled more than 1.44 million head (up 9.2%) which more than offset the 6.9% decline from Canada to just over 673 thousand head. Mexico primarily supplies feeder cattle weighing less than 320 KG (700 pounds) while Canada typically ships slaughter cattle.

### US CATTLE IMPORTS FROM MEXICO

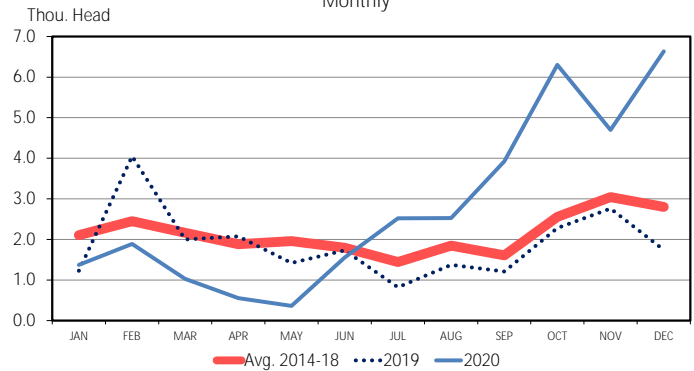


Data Source: USDA-ERS & USDA-FAS  
Livestock Marketing Information Center

The majority of U.S. cattle trade is imports, but in 2020 total cattle exports reached 321,142 head which is 4.3% above last year and the highest level in nearly two decades when exports reached 448,695 heads in 2001. Canada was the main destination for cattle exports at 269,278 head (down 1.9%) while shipments to Mexico increased 47.1% to 33,365 head, the highest since 2008 which was 49,203 head. Nearly 80% of the cattle shipped to Mexico occurred in the second half of 2020 (26,607 head).

Total hog imports reached nearly 5.3 million head, up 3.9% from a year ago and the highest level since 2017 which was almost 5.6 million head. Canada was the main supplier of hogs to the U.S. in 2020 with 84.2% of the hogs shipped being feeder pigs classified as weighing less than 7 KG, 7-23 KG, 23-50 KG, and over 50 KG. In pounds that is equivalent to less than 15 lbs., 15-50 lbs., 50-110 lbs., and over 110 lbs.

### US CATTLE EXPORTS TO MEXICO

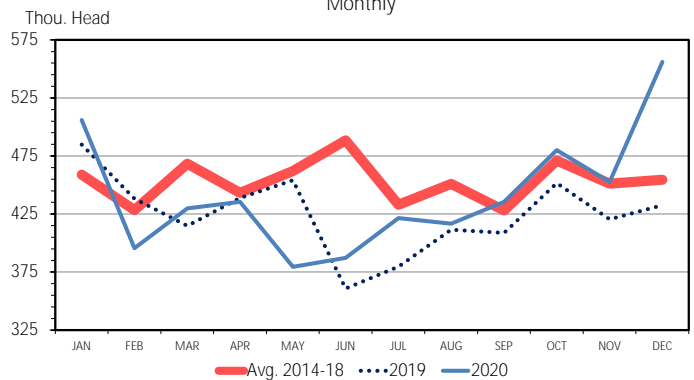


Data Source: USDA-ERS & USDA-FAS  
Livestock Marketing Information Center

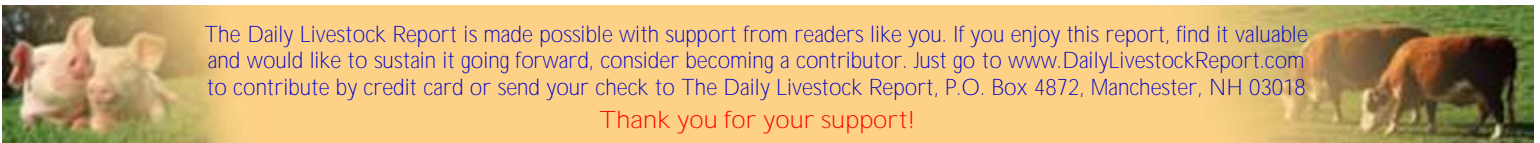
The remaining hogs supplied from Canada were either hogs for immediate slaughter or breeding animals.

USDA FAS does not release bilateral trade forecasts by country, but forecasts for total cattle and swine imports/exports are available for select countries. USDA FAS total U.S. cattle imports are forecast at 2.1 million head for 2021 which is down less than one percent (-0.7%) from 2020. Cattle export forecasts for Mexico and Canada are 1.45 million and 690 thousand head, respectively. The 2021 forecasted total U.S. swine imports are 5.3 million head (slightly over 2020) which is equal to the forecasted swine exports for Canada. An updated release of USDA FAS forecasts is scheduled to be released on April 9, 2021.

### US LIVE HOG IMPORTS FROM CANADA



Data Source: USDA-ERS & USDA-FAS  
Livestock Marketing Information Center



The Daily Livestock Report is made possible with support from readers like you. If you enjoy this report, find it valuable and would like to sustain it going forward, consider becoming a contributor. Just go to [www.DailyLivestockReport.com](http://www.DailyLivestockReport.com) to contribute by credit card or send your check to The Daily Livestock Report, P.O. Box 4872, Manchester, NH 03018

Thank you for your support!

The **Daily Livestock Report** is published by Steiner Consulting Group, DLR Division, Inc.. To subscribe, support or unsubscribe please visit [www.dailylivestockreport.com](http://www.dailylivestockreport.com).

The Daily Livestock Report is not owned, controlled, endorsed or sold by CME Group Inc. or its affiliates and CME Group Inc. and its affiliates disclaim any and all responsibility for the information contained herein. CME Group®, CME® and the Globe logo are trademarks of Chicago Mercantile Exchange, Inc.

Disclaimer: The *Daily Livestock Report* is intended solely for information purposes and is not to be construed, under any circumstances, by implication or otherwise, as an offer to sell or a solicitation to buy or trade any commodities or securities whatsoever. Information is obtained from sources believed to be reliable, but is in no way guaranteed. No guarantee of any kind is implied or possible where projections of future conditions are attempted. Futures trading is not suitable for all investors, and involves the risk of loss. Past results are no indication of future performance. Futures are a leveraged investment, and because only a percentage of a contract's value is required to trade, it is possible to lose more than the amount of money initially deposited for a futures position. Therefore, traders should only use funds that they can afford to lose without affecting their lifestyle. And only a portion of those funds should be devoted to any one trade because a trader cannot expect to profit on every trade.

## PRODUCTION & PRICE SUMMARY

Week Ending

2/6/2021

Source: Various USDA Agricultural Marketing Service (Market News) reports. DATA ARE PRELIMINARY.

Item	Units	Current Week	Last Week	Pct. Change	Last Year	Pct. Change	YTD	Y/Y % Change
		6-Feb-21	30-Jan-21		8-Feb-20			
Beef, Pork, Chicken, & Turkey	Mil Lbs., cwe	2,056	2,031	1.3%	2,028	1.4%	10,299	-2.8%
C FI Slaughter	Thou. Head	653	653	0.0%	631	3.4%	3,340	-5.1%
A FI Cow Slaughter **	Thou. Head	137	134	2.6%	134	2.8%	6,797	-1.5%
T Avg. Dressed Weight	Lbs.	846	844	0.2%	830	1.9%	848	2.8%
T Beef Production	Million Lbs.	551.3	550.1	0.2%	523.0	5.4%	2,833	-2.4%
L Live Fed Steer Price, 5-Mkt	\$ per cwt	113.28	112.44	0.7%	121.05	-6.4%		
E Dressed Steer Price, 5-Mkt	\$ per cwt	179.32	177.56	1.0%	193.18	-7.2%		
Oklahoma Steer (600-700 lbs)	\$ per cwt	145.39	145.20	0.1%	147.21	-1.2%		
& Choice Beef Cutout	\$ per cwt	235.31	230.28	2.2%	210.85	11.6%		
Hide/Offal	\$ per cwt, live wt	9.56	9.41	1.6%	9.12	4.8%		
B Rib, Primal, Choice	\$ per cwt	382.51	363.35	5.3%	336.47	13.7%		
E Round, Primal, Choice	\$ per cwt	192.49	192.10	0.2%	180.09	6.9%		
E Chuck, Primal, Choice	\$ per cwt	202.57	201.02	0.8%	170.27	19.0%		
F Trimmings, 50%, Fresh	\$ per cwt	50.52	60.07	-15.9%	54.58	-7.4%		
Trimmings, 90%, Fresh	\$ per cwt	223.34	220.35	1.4%	241.91	-7.7%		
H FI Slaughter	Thou. Head	2,691	2,658	1.2%	2,672	0.7%	13,866	-5.4%
H FI Sow Slaughter **	Thou. Head	65.4	67.8	-3.5%	61.8	5.9%	3,544	9.6%
O Avg. Dressed Weight	Lbs.	221.0	221.0	0.0%	216.0	2.3%	222	2.7%
G Pork Production	Million Lbs.	594.2	587.1	1.2%	575.9	3.2%	3,076	-2.9%
S Natl. Negotiated Purchase	Wtd. Avg.	59.66	56.46	5.7%	51.22	16.5%		
Natl. Base Carcass Price	Wtd. Avg.	69.01	67.73	1.9%	60.35	14.3%		
& Natl. Net Carcass Price	Wtd. Avg.	70.78	69.35	2.1%	62.29	13.6%		
Natl. Early Wean Feeder	10-12 Lbs.	55.47	54.41	1.9%	47.36	17.1%		
P Pork Cutout	\$ per cwt	82.80	82.60	0.2%	66.69	24.2%		
O By-product Value	\$ per cwt, live wt	4.51	4.46	1.1%	3.63	24.2%		
R Ham, Primal	\$ per cwt	71.79	71.59	0.3%	55.14	30.2%		
K Loin, Primal	\$ per cwt	79.73	79.30	0.5%	66.84	19.3%		
Belly, Primal	\$ per cwt	126.56	125.88	0.5%	86.31	46.6%		
Trimmings, 72%, Fresh	\$ per cwt	77.64	76.00	2.2%	57.81	34.3%		
C Young Chicken Slaughter *	Million Head	166.6	164.3	1.4%	171.98	-3.1%	807	-3.0%
H Avg. Weight (RTC)	Lbs.	4.83	4.83	0.2%	4.78	1.1%	4.84	1.0%
I Young Chicken Production (RTC)	Million Lbs.	805.4	792.7	1.6%	822.1	-2.0%	3,904	-2.0%
C Eggs Set (US)	Million	235.1	234.5	0.2%	238.8	-1.6%	13,209	0.0%
K Chicks Placed (US)	Million Head	186.0	187.9	-1.0%	191.5	-2.8%	10,542	-0.7%
E National Composite Whole Bird	Composite	82.93	82.22	0.9%	85.82	-3.4%		
N Northeast Breast, B/S	\$ per cwt	127.27	128.13	-0.7%	85.69	48.5%		
Northeast Leg Quarters	\$ per cwt	30.39	28.41	7.0%	41.49	-26.8%		
T Total Turkey Slaughter *	Million Head	3.97	3.74	6.2%	4.04	-1.7%	18.0	-8.8%
U Avg. Weight (RTC)	Lbs.	26.52	26.97	-1.7%	26.53	0.0%	26.88	-1.3%
R Turkey Production (RTC)	Million Lbs.	105.2	100.8	4.4%	107.1	-1.8%	485	-10.0%
K National Hen (8-12 Lbs)	\$ per cwt	106.29	109.78	-3.2%	98.00	8.5%		
G Corn, Omaha	\$ per Bushel	5.29	5.15	2.7%	3.79	39.8%		
R Distillers Grain, IA	\$ per Ton	230.00	225.00	2.2%	145.50	58.1%		
A Soybean, Cntrl IL	\$ per Bushel	13.84	13.64	1.5%	8.89	55.8%		
I Soybn Meal 48%, Cntrl IL	\$ per Ton	431.60	425.60	1.4%	289.20	49.2%		
N								

\* Chicken & turkey slaughter & production are 1 week earlier than the date at the top of this sheet.

\*\* Cow and sow slaughter reflect levels from two weeks ago (part of 'actual' rather than "preliminary" weekly slaughter report).

The Daily Livestock Report is made possible with support from readers like you. If you enjoy reading this report and would like to sustain it going forward, [consider becoming a contributor](http://www.DailyLivestockReport.com) by going to our website: [www.DailyLivestockReport.com](http://www.DailyLivestockReport.com)

Thank you for your support!

