

USDA Agricultural Marketing Service (AMS) Livestock, Poultry & Grain Market News releases two weekly reports with statistics on live animal imports from Canada, [WA\\_LS635](#) and [WA\\_LS637](#). Canadian imports by state of entry are reported in WA\_LS635 where WA\_LS637 reports imports into the U.S. by destination. Both reports provide detail on the imports of cattle, hogs, and horses. At the start of 2020 AMS released an updated format for both reports that includes further data and information on the importation of sheep, goats, bison, chickens, ducks, and turkeys. This DLR will focus on cattle and hogs.

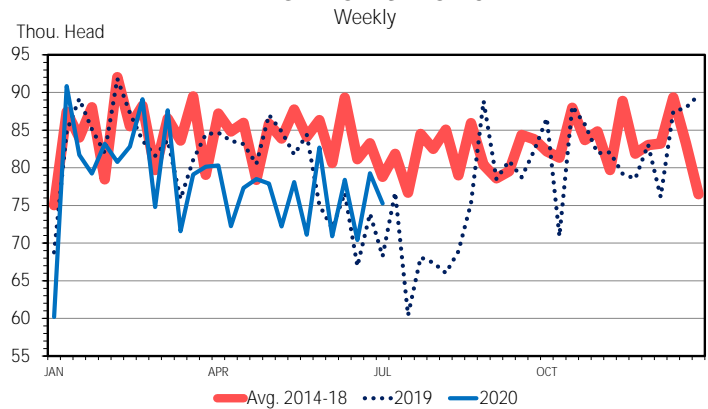
Canadian cattle imported into the U.S. have been trending below year-ago levels for most of the year with only eight weeks above 2019. Year-to-date imports, through the first 27 weeks of this year, are 13.7% below the same time a year ago. On average this year, nearly three-quarters (74.8%) of the cattle imported were categorized as slaughter steers/heifers/cows, last year the annual average was 68.2%. In this category, year-to-date imports up 7.1% from a year ago. Feeder cattle imports have dropped 50.4%, accounting for 18.1% of cattle imports on average this year which is lower than the 23.3% annual average for 2019. Slaughter bull imports are 11.8% lower than the same period last year. Breeding bull imports are up 20.5% while breeding females are down 2.9% year-to-date. This year looks to be continuing the trend of a higher percentage of slaughter steers/heifers/cows being imported with a lower percentage of feeder imports.

Hog imports from Canada were 2.4% below last year through the end of June. This year, over 80% of Canadian hog imports are feeder pigs destined for finishing operations. Through the first half of the year, feeder pig imports are 3.5% lower than in 2019. Only nine weeks this year have seen feeder pig imports above the same week last year with four of those weeks having just occurred. Imports of slaughter barrows

and gilts are up 19.3% year-to-date but slaughter sows and boars are down 3.8% from the same period last year.

Note: Last week, USDA AMS revised the weekly Canadian import hog data going back to the start of 2020. The reports have been corrected and revised data can be found at the links provided. After the changes, year-to-date volumes for imports of sows and boars are now at 215,874 head and barrows and gilts now at 227,522 head making a difference of 11,648 head between categories. Through the first half of the year, average weekly imports of boars and sows are now 7,995 head while barrows and gilts are now 8,427 head a difference of 432 head per week.

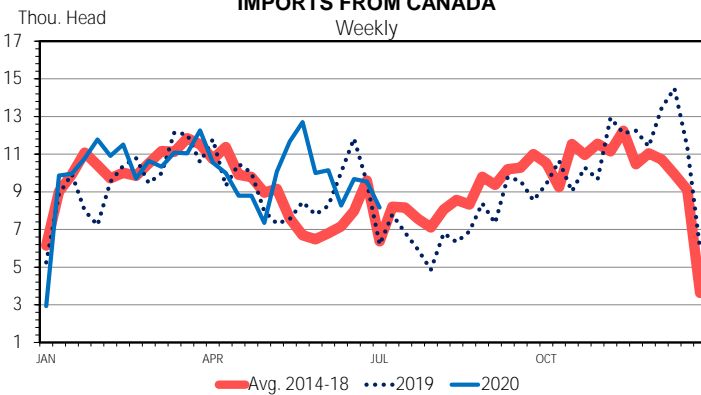
### FEEDER PIG IMPORTS FROM CANADA



Data Source: USDA-AMS & USDA-APHIS  
Livestock Marketing Information Center

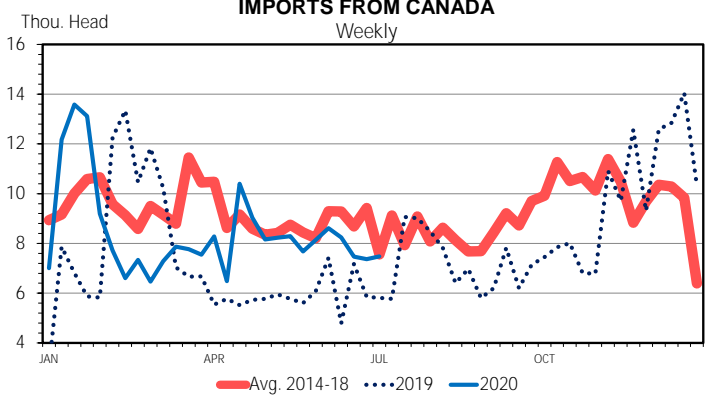
07/16/20

### SLAUGHTER STEERS, HEIFERS, AND COWS IMPORTS FROM CANADA



Data Source: USDA-AMS & USDA-APHIS  
Livestock Marketing Information Center

### SLAUGHTER BARROWS & GILTS IMPORTS FROM CANADA



Data Source: USDA-AMS & USDA-APHIS  
Livestock Marketing Information Center

07/16/20

The Daily Livestock Report is made possible with support from readers like you. If you enjoy this report, find it valuable and would like to sustain it going forward, consider becoming a contributor. Just go to [www.DailyLivestockReport.com](http://www.DailyLivestockReport.com) to contribute by credit card or send your check to The Daily Livestock Report, P.O. Box 4872, Manchester, NH 03018

Thank you for your support!

The **Daily Livestock Report** is published by **Steiner Consulting Group, DLR Division, Inc.** To subscribe, support or unsubscribe please visit [www.dailylivestockreport.com](http://www.dailylivestockreport.com).

The Daily Livestock Report is not owned, controlled, endorsed or sold by CME Group Inc. or its affiliates and CME Group Inc. and its affiliates disclaim any and all responsibility for the information contained herein. CME Group®, CME® and the Globe logo are trademarks of Chicago Mercantile Exchange, Inc.

Disclaimer: The *Daily Livestock Report* is intended solely for information purposes and is not to be construed, under any circumstances, by implication or otherwise, as an offer to sell or a solicitation to buy or trade any commodities or securities whatsoever. Information is obtained from sources believed to be reliable, but is in no way guaranteed. No guarantee of any kind is implied or possible where projections of future conditions are attempted. Futures trading is not suitable for all investors, and involves the risk of loss. Past results are no indication of future performance. Futures are a leveraged investment, and because only a percentage of a contract's value is required to trade, it is possible to lose more than the amount of money initially deposited for a futures position. Therefore, traders should only use funds that they can afford to lose without affecting their lifestyle. And only a portion of those funds should be devoted to any one trade because a trader cannot expect to profit on every trade.